

All of our Ergo chairs were engineered with your total comfort in mind. Aesthetics, form and function are merged seamlessly in a single design, allowing Ergo chairs to be minutely adjusted to achieve unrivaled support. A synchro-tilt mechanism with infinite lock, sliding seat, pneumatic height adjustment, and headrest, are standard on all Ergo models. Add a choice of mesh, leather, or a selection from our Fabrix catalog, and you can build the perfect Ergo chair for you.

## specifications

### Overall Dimensions

26.5" x 29" x 46-52"  
(W x D x H)

### Seat

20.5" x 18.5" (W x D)

### Back

20.5" x 28" (W x H)

### Seat Height

18.1" (at lowest point)  
22.9" (at highest point)

### Weight

66 lbs

### Cube

10.8



high-back  
ME7ERG



## features

### Tilt Tension Control

Recline rate adapts to weight of user.

### Tilt Lock

Locks out tilt function.

### Back Angle Adjustment

Sets back angle for personalized comfort in reclined position.

### Synchro-Tilt

Back reclines in a preset ratio to seat.

### Seat Height Adjustment

Sets seat height to desired position relative to floor.

### Waterfall Seat

Front of cushion slopes to reduce pressure on the back of the knees.

### Back Height Adjustment

Raise or lower to support the lumbar (lower back) region.

### Seat Depth Adjustment

Adjusts seat depth relative to back.

### Arm Height Adjustment

Adjusts arm up or down for proper ergonomic positioning while seated.

### Swivel Arm

Arm pads angle in or out for proper ergonomic positioning.

### Arm Depth Adjustment

Arm pads slide forward or backward for proper ergonomic positioning.

### Single Lever Adjustment

### Adjustable Headrest

## standard colors

blue mesh  
KM15



grey mesh  
W09-53



green  
mesh KM14



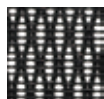
plum red  
mesh KM12



orange/  
copper  
mesh KM13



black  
mesh  
W09-1



**eurotech**  
a raynor group company

1.800.637.0005

email: [customerservice@raynorgroup.com](mailto:customerservice@raynorgroup.com)  
catalog requests: [literature@raynorgroup.com](mailto:literature@raynorgroup.com)