

Offering a cutting-edge workspace design, the Fuzion will never compromise comfort during an 8-hour day. The seat moves with you, as you move, providing both freedom of movement and continuous support.

specifications

Overall Dimensions

26" x 27.5" x 46-51"
(W x D x H)

Seat

20.5" x 19" (W x D)

Back

20.5" x 33" (W x H)

Seat Height

18.3" (at lowest point)
23" (at highest point)

Weight

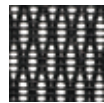
66 lbs

Cube

100

standard colors

black mesh W09-1



high-back

FUZ9LX-HI-BKALU



features

Tilt Tension Control

Recline rate adapts to weight of user.

Tilt Lock

Locks out tilt function.

Back Angle Adjustment

Sets back angle for personalized comfort in reclined position.

Synchro-Tilt

Back reclines in a preset ratio to seat.

Seat Height Adjustment

Sets seat height to desired position relative to floor.

Waterfall Seat

Front of cushion slopes to reduce pressure on the back of the knees.

Seat Depth Adjustment

Adjusts seat depth relative to back.

Arm Height Adjustment

Adjusts arm up or down for proper ergonomic positioning while seated.

Swivel Arm

Arm pads angle in or out for proper ergonomic positioning.

Arm Depth Adjustment

Arm pads slide forward or backward for proper ergonomic positioning.

eurotech
a raynor group company

1.800.637.0005

email: customerservice@raynorgroup.com
catalog requests: literature@raynorgroup.com